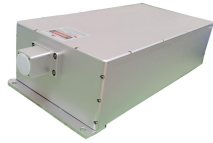


UV-B-355/ 500-1000mW



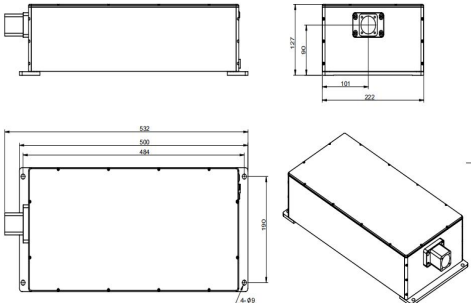
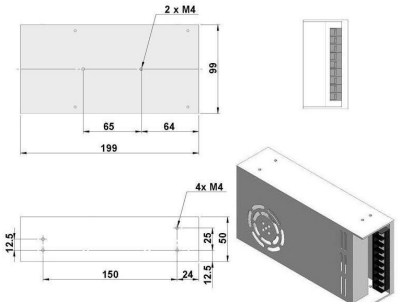
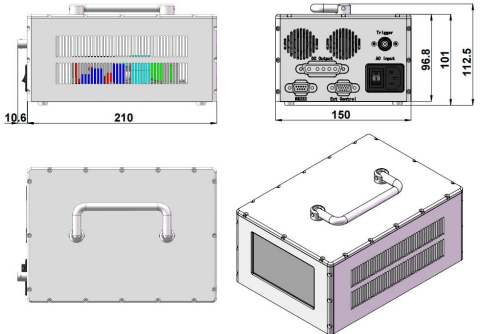

LD PUMPED ALL-SOLID-STATE LASER

All solid state laser is made features of ultra compact, long lifetime, low cost and easy operating, which is used in fluorescence sensors, Raman spectrum, laser printing, holography, laser display, submarine communication, biomedicine, laser lighting show, etc.

SPECIFICATIONS

Wavelength (nm)	355±1
Operating mode	CW
Output power (mW)	500-1000
Power stability (rms, over 4 hours)	<5%, <3%, <2%
Transverse mode	TEM ₀₀
Beam diameter at the aperture (1/e ² , mm)	<2.0
Beam divergence, full angle (mrad)	<5
Beam quality (M ²)	<1.3
Polarization ratio	>100:1, Horizontal
Beam height from base plate (mm)	90
Warm-up time (minutes)	<10
Cooled method	Water cooled
Operating Temperature (°C)	10-35
Supply Voltage	DC 24V/ 13A (PSU-24/ PSU-24-P optional)



UV-B-355 <i>Integrated electronics</i>	PSU-24 ^① (Power supply 100-240VAC)	PSU-24-P ^② (Power supply 100-240VAC)	Water Chiller (WCH-580)
 <p>532(L)×222(W) ×127(H) mm³, 18.1 kg</p>	 <p>DC24V 13A; 199 (L) ×99 (W) ×50 (H) mm³, 0.9 kg</p>	 <p>220.6 (L) ×150 (W) ×112.5 (H) mm³, 2.75 kg</p>	 <p>369.8 (L) ×258.4(W) ×240.6 (H) mm³, 10.5 kg</p>

Note:

①Adaptor for 24V/13A.

②Adaptor for 24V/13A, and power control function is included.