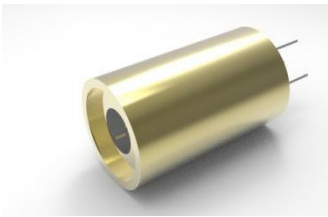


PGL-D12-445/447/450



PGL-D12-445/447/450 is made features of wide temperature range operating (without TEC), high reliability and low cost, which made it be used widely in orientation, alignment and measurement, etc.

SYSTEM SPECIFICATIONS*

Wavelength	nm	445	447	450
Wavelength tolerance	nm	±10		
Output power	mW	1-50		
Operating mode		CW		
Transverse mode		Near TEM ₀₀		
Beam diameter at the aperture	1/e ² , mm	~3.5		
Beam divergence, full angle	mrad	<1		
Expected lifetime	hours	10,000		
Warranty	months	6		

ELECTRICAL SPECIFICATIONS

Operating voltage(external PCB1)	6VDC(TTL10kHz)
Operating voltage(external PCB2)	5VDC(TTL30kHz or Analog0-3V,0-5V)
Operating voltage(external PCB3)	5-12VDC(TTL30Khz and Analog 0-3V,0-5V)
Connection	Cable with flying leads

ENVIRONMENTAL CONDITIONS

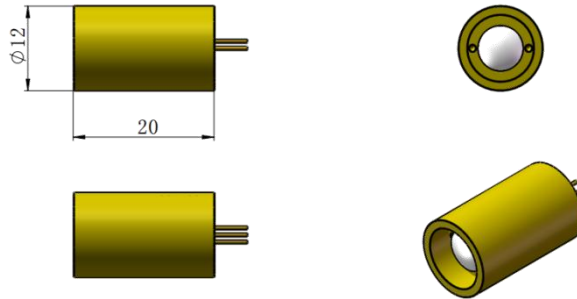
Operating temperature	0°C to 40°C
Storage temperature	-20°C to 80°C
Humidity	<90 %, non-condensing
Dissipated heat	<1.8W

MECHANICAL SPECIFICATIONS

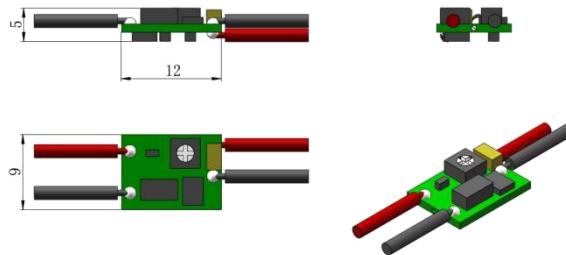
Laser head diameter Φ	mm	12
Length	mm	20
Material		Copper
Shell polarity		The housing has non-polarity.

*All testing data under the conditions of temperature 25°C.

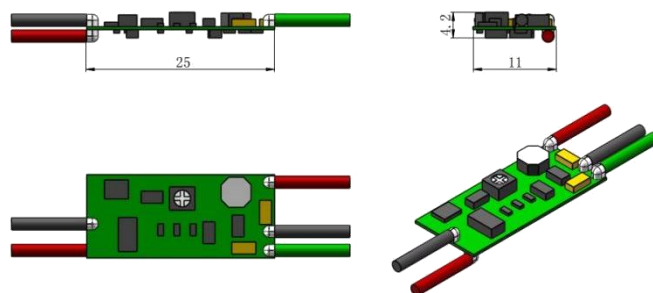
Dimensions of laser($\Phi 12 \times 20 \text{mm}^2$)



Dimensions of PCB1(*small size*, $9 \times 12 \text{mm}^2$, 6VDC, TTL)



Dimensions of PCB2($25 \times 11 \text{mm}^2$, 5VDC, TTL or Analog)



Dimensions of PCB3(*wide voltage input range*, $20 \times 30 \text{mm}^2$, 5-12VDC, TTL and Analog)

