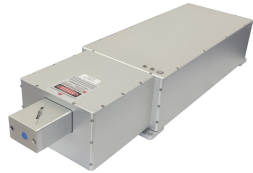


AO-266W 400mW~1W



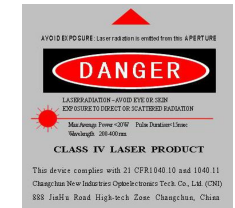
**LD PUMPED ALL-SOLID-STATE  
UV AOM Q-SWITCHED LASER**

All solid state AOM Q-switched laser at 266 nm has the features of high peak power, high repetition rate, and short pulse duration, which is widely used in marking, carving, measure, research and so on.



**SPECIFICATIONS**

Wavelength (nm)	266±1	
Operating mode	Acousto-Optic Q-switched	
Average power (W)	500mW@50kHz	1W@80kHz
	Average power (W) = Single pulse energy (mJ) * Rep. rate (kHz)	
Single pulse energy (μJ)	>10μJ@50kHz	>15μJ@80kHz
Rep. rate (kHz)	50-200	
Pulse width (ns)	~10 @50kHz	~15 @80kHz
Transverse mode	TEM <sub>00</sub>	
Beam Circularity (%)	>85	
Beam divergence, full angle (mrad)	<1.5	
Beam diameter at the aperture (1/e <sup>2</sup> , mm)	~1.0	
Polarization ratio	>100:1, Horizontal	
Beam height from base plate (mm)	88.5	90
Warm-up time (minutes)	<10	
Cooled method	Water Cooled	
Operating temperature (°C)	10~35	
Supply Voltage	DC 24V/13A (PSU-24/ PSU-24-P optional)	DC 30V/18.6A (PSU-30/ PSU-36-P optional)



<p>AO-266W-500mw <i>Integrated electronics</i></p>	<p>PSU-24<sup>①</sup> (Power supply 100-240VAC)</p>	<p>PSU-24-P<sup>②</sup> (Power supply 100-240VAC)</p>	<p>Water Chiller (WCH-580)</p>
<p>588 (L) × 222 (W) × 121 (H) mm<sup>3</sup>, 20 kg</p>	<p>DC24V 13A; 199 (L) × 99 (W) × 50 (H) mm<sup>3</sup>, 0.9 kg</p>	<p>220.6 (L) × 150 (W) × 112.5 (H) mm<sup>3</sup>, 2.75 kg</p>	<p>369.8 (L) × 258.4(W) × 240.6 (H) mm<sup>3</sup>, 10.5 kg</p>

AO-266W-1W <i>Integrated electronics</i>	PSU-30 <sup>①</sup> (Power supply 100-240VAC)	PSU-36-P <sup>②</sup> (Power supply 100-240VAC)	Water Chiller (WCH-580)
<p>695 (L) × 195 (W) × 124 (H) mm<sup>3</sup>, 21.15 kg</p>	<p>DC30V 18.6A; 230 (L) × 127 (W) × 40.5 (H) mm<sup>3</sup>, 1 kg</p>	<p>220.6 (L) × 150 (W) × 112.5 (H) mm<sup>3</sup>, 2.75 kg</p>	<p>369.8 (L) × 258.4 (W) × 240.6 (H) mm<sup>3</sup>, 10.5 kg</p>

Note:

- ① Adaptor for 24V 13A or 30V/18.6A.
- ② Adaptor for 24V/13A or 30V/18.6A, and power control function is included.