


450nm 100mw Laser Diode| Single mode LD

445nm~450nm SM LD| 100mw Output Power | Blue Laser Diode | Single Mode Beam

WSLD-445-100m-1

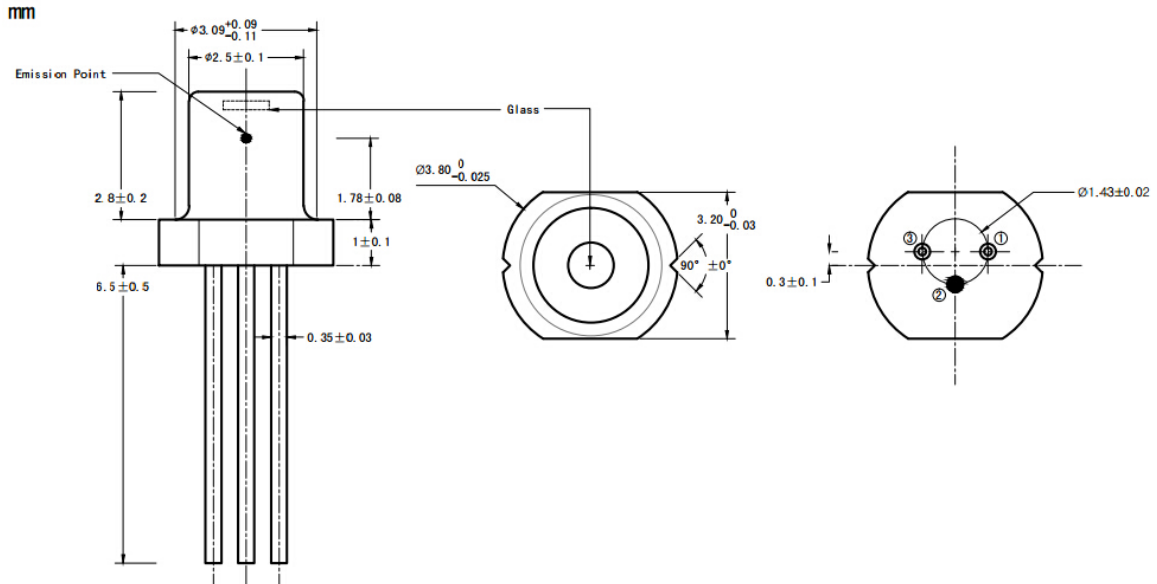
Wavespectrum Laser Group

www.wavespectrum-laser.com

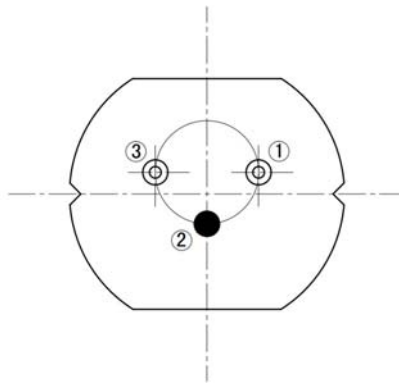
445nm Laser Diode		Wavespectrum Laser Group	
PARAMETER	SYMBOL	VALUE	UNIT
Reverse Voltage	V_r	2.0	V
Operating Temperature	T_{op}	+10~+70	°C
Storage Temperature	T_{stg}	-40~+85	°C
Lead soldering temperature (10 sec.)	T_{is}	260	°C
Features: <ul style="list-style-type: none"> ● 445nm ● 100mW Power ● Single Mode Beam 			
Applications: <ul style="list-style-type: none"> ● Medical Laser Treatment ● Laser Indicator ● Laser Detector 			
Specifications	WSLD-445-100m-1		
	Min	Type	Max
Center Wavelength@25°C	440nm	445nm	460nm
Spectral Width (FWHM)	2.0nm		
Output Power	80mW	100mW	----
Emitter	Single		
Beam Divergence (FWHM)	----	$15^\circ \perp \times 7^\circ //$	$25^\circ \perp \times 12^\circ //$
Monitor Current	----		
Slope Efficiency	0.80mW/mA	1.0mW/mA	1.2mW/mA
Threshold Current (Typ.)	----	35mA	60mA
Operating Current (Typ.)	----	140mA	160mA
Operating Voltage	----	5.8V	7V
Package Style	3.8mm		



TO Can Package :



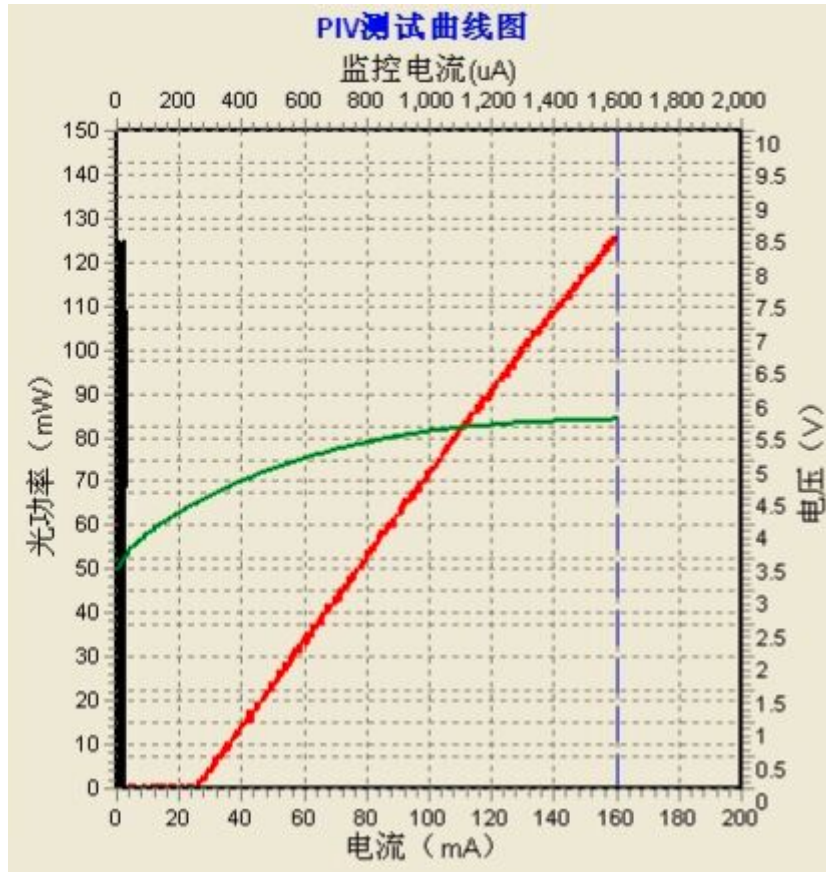
PIN Bottom View:



1	LD(+)
2	GND
3	LD(-)



PVI Curve



Wavespectrum Laser, Inc.
www.wavespectrum-laser.com
wavespectrumlaser@gmail.com

