



1470nm 12W Fiber Coupled Laser Diode (LD) Module | Blue Green Red Aiming Beam Optional
1470nm|12W Output Power| HHL Package| 200um 400um Fiber Core| High Power LD|TEC Cooling
WSLB-1470-012-H Wavespectrum Laser Group www.wavespectrum-laser.com

www.wavespectrum-laser.com

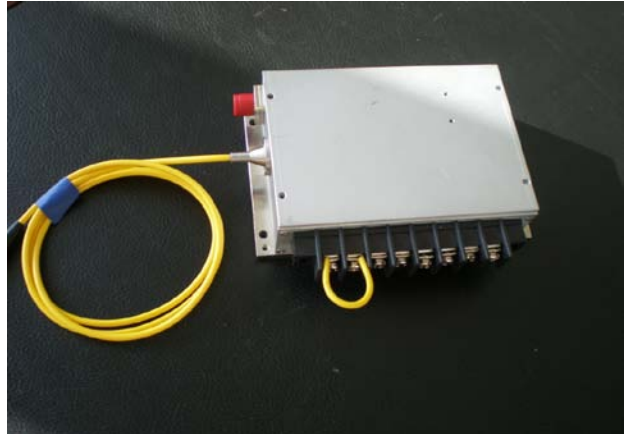
PARAMETER	SYMBOL	VALUE	UNIT
Reverse Voltage	V_r	2.0	V
Operating Temperature	T_{op}	+10 ~ +30	°C
Storage Temperature	T_{stg}	-20 ~ +80	°C
Lead soldering temperature (10 sec.)	T_{is}	260	°C

Features:

- 1470nm
- **Built-in** TEC Cooling Optional
- Aiming Beam Optional
- Stainless Steel Armor Optional

Applications:

- Medical laser treatment
- Pumping
- Others



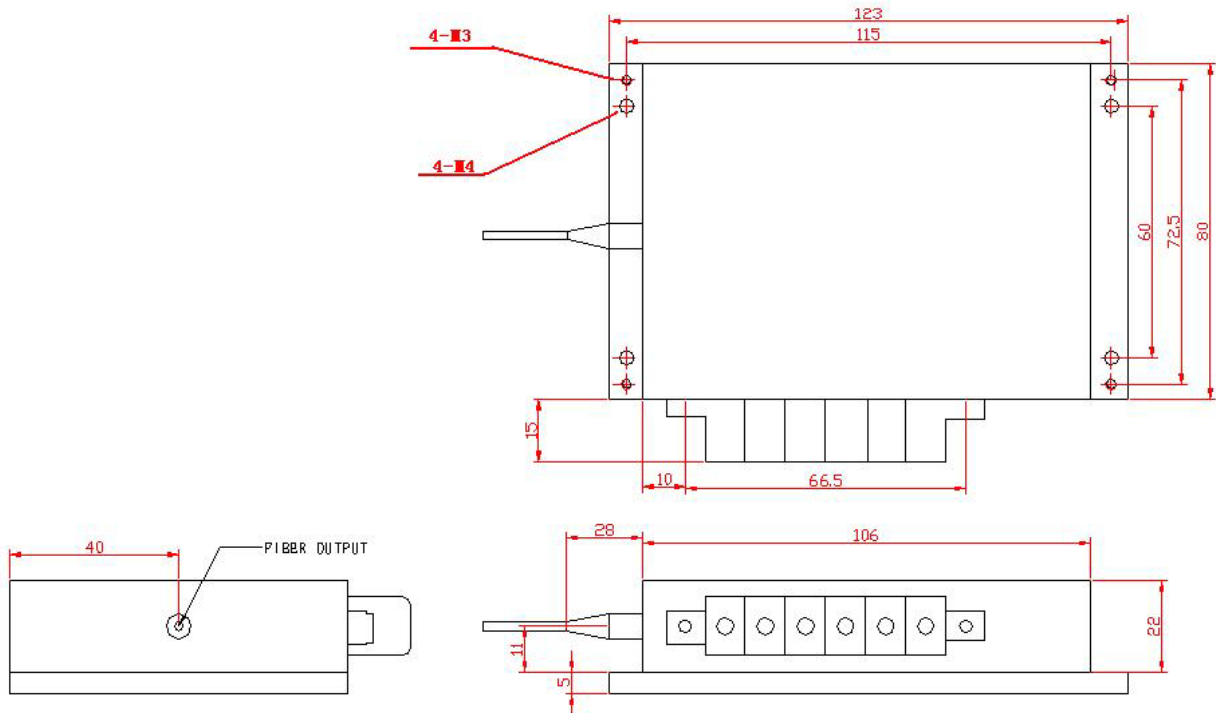
Specifications

WSLB-1470-012-H

	Min.	Type	Max.
Center Wavelength@25°C	±10nm	1470nm	±30nm
Spectral Width (FWHM)	----	15nm	----
Output Power	----	12W	----
Temperature Coefficient of Wavelength	----	0.65nm / °C	----
Threshold Current (Typ.)	----	400mA	----
Operating Current (Typ.)	----	10.5A	----
Operating Voltage		7.8V	
TEC Cooling	Optional		
Fiber Core Diameter	300um		
Fiber Numerical Aperture	0.22		
Fiber Length	100cm		
Connector Type	FC / SMA905		
Package	P2 Package		
Aiming Beam	Optional (Red/Blue /Green)		



Package View



PIN	1	2	3	4	5	6
	LD(+)	LD(-)	RT	RT	TEC(-)	TEC(+)

Wavespectrum offer **Customized** 1470nm Fiber Coupled LD.

Please let me know your special request:

- Customized Output Power
- Customized Fiber
- Customized Fiber Connector

Contact us with info@wavespectrum-laser.com

Electrically shorten LD module and store in non-extreme conditions.

Suggest using the constant current power supply.



Wavespectrum Laser, Inc.
 www.wavespectrum-laser.com
 wavespectrumlaser@gmail.com

