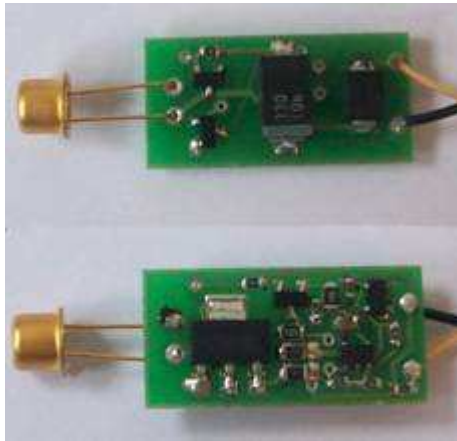


Led driver mD-1p



Driver mD-1p is designed for power supply of LEDs (including mid-IR LED's manufactured by IBSG).

The driver generate sequence of pulses (pulse mode). Such mode provides maximum peak optical power from the LED.

Signal data (such as amplitude, repetition rate and pulse duration), remains steady while the input voltage may change in the range from 5 to 6 voltage.

Signal waveform is shown in fig.1.

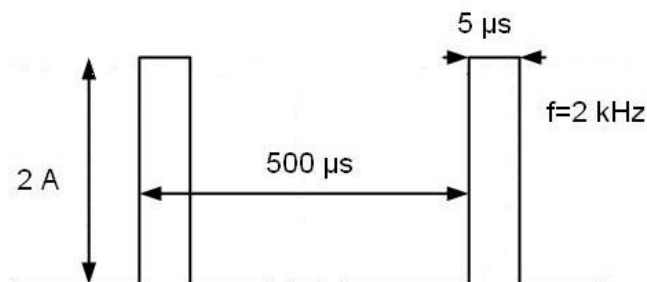
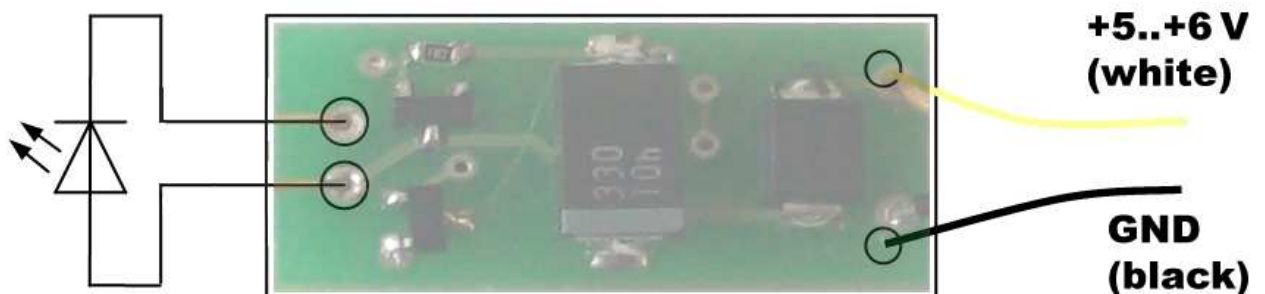


Fig.1. Signal waveform generated by the driver.

Circuit of coupling



Technical parameters

Input voltage range	+5 ÷ +6 V, stabilized
Power consumption (Wattage)	Less than 4 watt
Board dimensions (without LED), mm	24×12
Weight	5 g
Signal data	
Repetition rate (Frequency)	2 kHz
Pulse duration	5 μs
Output current amplitude	2 A

- ✓ This power supply is for indoor use only.
- ✓ Please mount or dismount this unit in power-off state. If the unit were mounted or dismounted in power-on state, it can be cause of breakdown.
- ✓ This unit is not damp-proof or dust-proof.

Block diagram

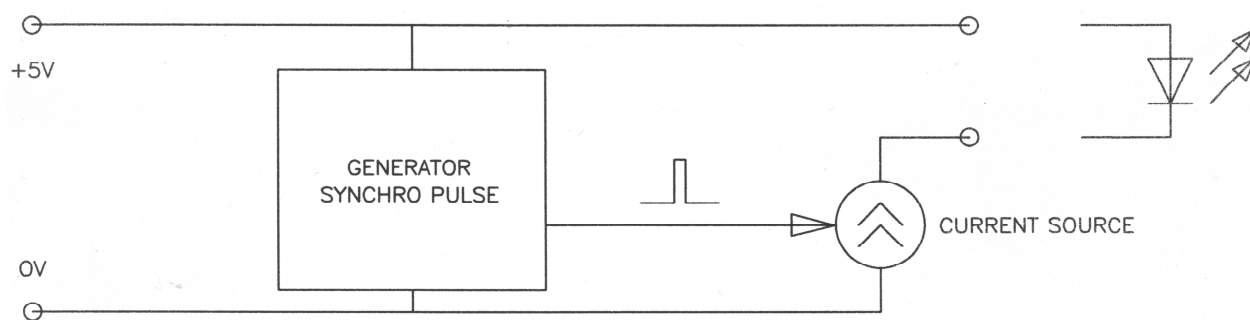


Fig.2. The Block diagram of mD-1p.